

Perennial NEWS

A PUBLICATION OF THE
PERENNIAL PUBLIC POWER DISTRICT

October 2022
Vol. 23
No. 5



INSIDE THIS ISSUE

Darn, those pesky squirrels!

It's squirrel awareness month.

Charging your EV correctly

Here are some tips to safely charge your electric vehicle.

Energy for Generations
PERENNIAL
PUBLIC POWER DISTRICT

Electricity – Powering Our Daily Lives

October is Public Power Month here in Nebraska. It is an opportunity to remind everyone about the benefits of public power. One benefit of public power is that it allows customers to have local control, such as, during elections when registered voters vote for who will represent them on their local public power district's board of directors. The focus is on the customer and public power utilities work hard to deliver the highest level of service and value to customers. On a national average, public power and not-for-profit utility rates are lower than private utilities.

As a native Nebraskan, I have enjoyed the benefits of public power my entire life. Every day electricity provides lighting, refrigeration, energizes appliances, heats, and cools our homes. Today, we rely on electricity to keep us connected to the outside world via televisions, computers, tablets, mobile phones and personal assistant devices. Growing up in eastern Nebraska I remember when the March 29, 1976 blizzard brought destruction to over 70 communities in Nebraska, thankfully the power stayed on at our home. I recall asking

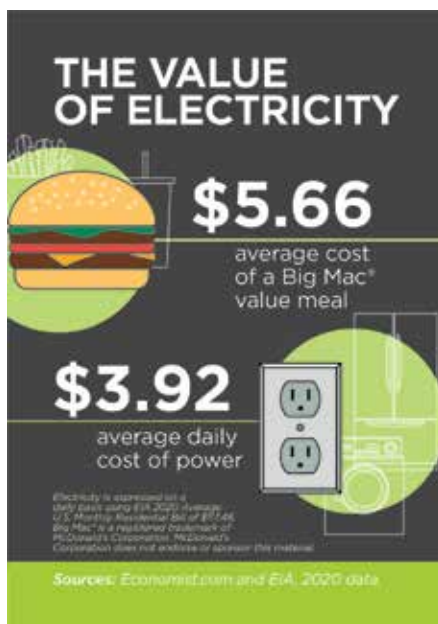
my mom how people were surviving without electricity, I couldn't imagine not having electricity to power my daily life.

We have all seen rising cost since the pandemic, whether it is at the gas

station, fast food, or groceries. Electricity is still a bargain here in Nebraska thanks to cooperatives, municipalities, and not-for-profit public power districts, like Perennial. According to the U.S. Energy Information Administration, in 2020 the average daily cost of power at a residential service was \$3.92, compared to the average cost of a value meal from a fast-food restaurant costing at least \$5.66. Low-cost, reliable, and safe

electricity is what public power is all about. Affordability in today's world is something to be proud of, Perennial has had stable rates for nine consecutive years.

Electricity is an essential part of powering our daily lives, we don't usually think much about it until we do not have it. Celebrate public power and all it brings to your life every day!



Lisa Jacobsen
Manager of
Customer Services

Perennial News (USPS 21610)

is published bimonthly by:

Perennial Public Power District
2122 South Lincoln Avenue
York, NE 68467

Phone: (402) 362-3355

www.perennialpower.com

email: perennial@perennialpower.com

Subscription Rates: \$1.00 per issue

Periodical postage paid at York, NE.

POSTMASTER:

Send address changes to:

Perennial News
2122 South Lincoln Avenue
York, NE 68467

On Our Cover:

2022 Ford Lightning parked in front of a substation.

Smarter meters are reducing outage times

Now if only we could train squirrels to stay away from utility equipment.

Better technology has been making your electricity more reliable every year.

But long standing troublemakers from lightning to squirrels still knock our lights out occasionally.

In the last few years, less expensive and more sophisticated meters and monitoring systems can detect outages faster than ever.

"We're far more automated than we were a decade ago," says Steve Gerken, Perennial's Manager of Operations. "In most cases we don't have to wait for someone to call and say they're out of power. Now the customer's electric meter lets the district know."

The amount of time a typical consumer is without power during a year is down to less than two hours, according to a benchmarking report from the Institute for Electrical and Electronics Engineers. That's a 20 percent decline from 2011 to 2014, the latest year in the study.

Gerken says some causes of power outages are hard to eliminate. Those include lightning strikes, equipment failure, trees falling on power lines, people driving into utility poles, or small animals contacting equipment.

"Squirrels are a pain," Gerken says. "They eat insulation." And in case you want to know how much of a pain squirrels can be, check out the website cybersquirrel1.com. The site features a map of all power outages caused by squirrels. You can scan the world and search for the incidents caused by squirrels or other animals, by month or year, and click through to a news articles of the details. For example, the site reports 10 squirrel-caused outages in the U.S. in January. Those involved squirrels getting into substations and transformers, touching a live wire and a ground wire and tripping circuit breakers.

As technology advances and reliability improves, we will do our best to prevent outages so you can enjoy the safe, reliable and affordable power you depend on.



Electric Vehicle S

What are the biggest mistakes people make when charging their electric vehicle (EV)? Safety missteps include using an extension cord and using inappropriate or substandard charging equipment.

Do not increase the reach of the charger's cord by using an extension cord, regardless of its rating. Extension cords cannot handle the amount of amperage that car chargers require.

Another mistake EV owners make is not using a professional charger, which can cause serious safety issues and possibly compromise your vehicle.

Other home-charging safety tips include:

- Purchase a charging system and equipment that is endorsed/sold by an EV manufacturer whenever possible. This is not the time to buy an off-brand or bargain.



Ford Lightning charging at a public charging station.

- Ensure all charging equipment is safety tested and endorsed by a laboratory such as Underwriters' Laboratories (UL).
- Have a Level 2 charging station, which requires a 240-volt outlet, installed by a licensed electrical contractor. Plugging an EV into a standard 120-volt outlet is considered Level 1 charging.
- Use a charger on a dedicated circuit and make sure your home's electrical system can handle the load.
- Look for excessive wear or damage, which could present a shock hazard. This also holds true for DC fast chargers, sometimes referred to as Level 3 chargers.
- Always follow the manufacturer's instructions for charging and using your EV.
- Place all charging components out of children's reach when not in use.



Safety

If you do not yet own an EV and you are considering purchasing one, be sure to do your homework. Since EV features differ, it is a good idea to thoroughly research them before purchasing one. You will want to consider how far you would like to drive it in between charges (short-range versus extended), what type of home-charging system you will use (Level 1 or Level 2), your budget, the type of electric vehicle (e.g., SUV, sedan, truck) and the vehicle's safety ratings.



The interior of the Ford Lightning.



Front trunk area of Ford Lightning, which Ford refers to as a Frunk.

Department at 402-362-3355 to make sure your transformer is sized correctly so you do not experience any interruptions in service or problems with the quality of service you receive.

To learn more about electrical safety, visit SafeElectricity.org.

If you are curious about EVs, call us at 402-362-3355 to learn more. Perennial also offers a few EV incentives which you may qualify to receive.

Finally, if you plan to purchase an EV, contact our Operations

CHARGE YOUR ELECTRIC VEHICLE SAFELY



Electric vehicles (EVs) are fun to drive and do not emit exhaust. However, taking proper precautions is essential to a safe charge!

PLUG DIRECTLY INTO AN OUTLET

Never use an extension cord or multi-plug adapter with a charging cord. Instead, plug directly into an appropriate outlet.



USE NAME-BRAND CHARGERS

Charging equipment should be sold or endorsed by the EV manufacturer. This is not the time to bargain hunt!

USE A LICENSED CONTRACTOR

Have a Level 2 charger installed on its own circuit by a professional who will assess if your home can handle the load.



LOOK FOR WEAR AND TEAR

Frequently check for wear and damage to charging cords, plugs and ports, which could present a shock hazard.

FOLLOW THE INSTRUCTIONS

Manufacturers provide important instructions for charging your vehicle. Follow these closely.



KEEP OUT OF REACH

Make it a habit to place all charging components out of children's reach when not in use.

CHECK PUBLIC STATIONS

When using a public charging station, look for excessive wear and damage to the equipment.



REMEMBER

The biggest difference between Level 1 and Level 2 charging is the amount of time it takes to charge a vehicle.

Cooper Nuclear Station Tour

Perennial Public Power District was part of approximately 40 Nebraska Public Power District (NPPD) Wholesale customers that were given the opportunity to tour NPPD's Cooper Nuclear Station (CNS) near Brownville, NE.

The tour began with a quick view of the plant with a welcome video given by Site Vice President, Khalil Dia and Emergency Prep Drill Scenario Coordinator, Josh Unruh. Cooper teammates then led small group tours explaining the plant's boiling water reactor and the overall background of nuclear energy. Highlights of the day included an in-depth look at security, a view of the fuel storage pool/installation of new fuel in the spent fuel pool, a demonstration of the control room simulator and more, all of which provided a broad understanding of how CNS supplies safe, clean, and reliable electricity to Nebraska.

The attendees represented employees, Board members, and spouses from the following: Burt County PPD, Butler PPD, Custer PPD, Dawson PPD, Elkhorn RPPD, Polk County



Left to Right_Jeremy Styskal, Perennial Manager Matthew Moffitt, Perennial Board Treasurer Steve Wright, and Brandon Lehman visited the Cooper Nuclear Station.

RPPD, Cuming County PPD, Southwest PPD, Southern PPD, Perennial PPD and KBR RPPD.

United States Postal Service Statement of Ownership, Management and Circulation

[illegible][illegible]

UNITED STATES POSTAL SERVICE® (All Periodicals Publications Except Requester Publications)		Average No. Copies Each Issue During Preceding 12 Months	No. Copies of Single Issue Published Nearest to Filing Date
a) Paid Electronic Copies		0	0
b) Total Paid Print Copies (Line 10b + Publication Distribution Outside the US)			
c) Total Free Distribution (Line 10c + Publication Distribution Outside the US)			
d) Grand Total (Line 10a + b + c + d) = Total Copies (Not double-counted by line 10a + 10b)			

☐ I certify that 5% of my paid electronic copies (payments sent print and paid above a nominal price).

☒ Publication of Statement of Ownership.

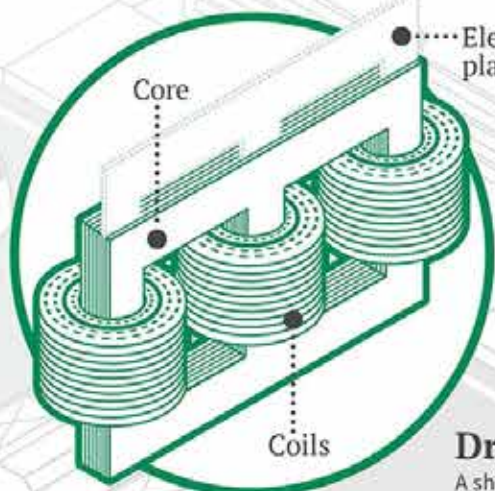
☐ If this publication is a general publication, publication of this statement is required. I will pay postage in the month _____ of the year _____.
☐ Publication not required.

☐ Signature and Title of Editor, Publisher, Business Manager, or Owner

Courtney C. Greenberger
Courtney C. Greenberger
ST-1002

Trouble With Transformers

Months of constricted operations at electrical transformer factories caused by the COVID-19 pandemic have strangled inventory of these essential grid devices. Add to that spiking demand from new housing developments, scarcity of raw and finished materials, bottlenecks at shipping ports and a shortage of freight drivers, and it's a recipe for a long-term supply crunch. Here are some of the key drivers of the current national transformer shortage.



..... Electrical steel plates

Electrical Steel

A global shortage of electrical steel, a key component in transformers, is slowing production.

Labor Shortages

A tight labor market is causing difficulties in hiring and retaining factory worker and technicians.



Driver Shortages

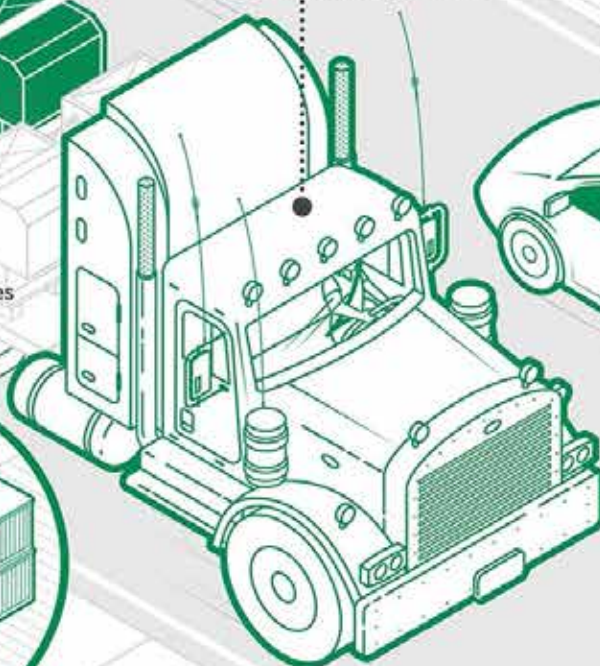
A shortage of truck drivers and warehouse workers is impeding deliveries of finished products.

High Demand

Developments in growing areas of the country and summer storm prep are spiking the need for new transformers.

Shipping Bottlenecks

Imports of components made overseas are being delayed by labor shortages at U.S. shipping ports.



Electric Vehicles

Much of the world's tight supply of electrical steel is being absorbed by the booming EV market.

Source: NRECA, Designer: Kevin Kepple

Utility Line Scholarship

Perennial Public Power District is offering a \$1,000 per year scholarship to a student planning to enroll in an accredited utility line program. Applicants must reside within Perennial's service area to be eligible.

This scholarship program is aimed at highly-motivated and safety-conscious individuals who want to become a line technician. Participation in this program offered by Perennial does not guarantee future employment by Perennial.

The application deadline for this scholarship is **December 31, 2022**. Scholarship applications and applicant guidelines are available on our website, www.perennialpower.com or contact Courtney Giesenhausen at cgiesenhausen@perennialpower.com.



Use Appliances Efficiently

Did you know the combined use of large appliances like dishwashers, clothes dryers and washing machines account for the largest percentage of electricity use in the average U.S. home? Take small steps to save energy when using these appliances. Only run full loads in the dishwasher, and thoroughly scrape food from dishes before loading. Dry towels and heavier cottons separate from lighter-weight clothing, and clean the lint screen after every use. Wash clothing in cold water to save energy used to heat water.